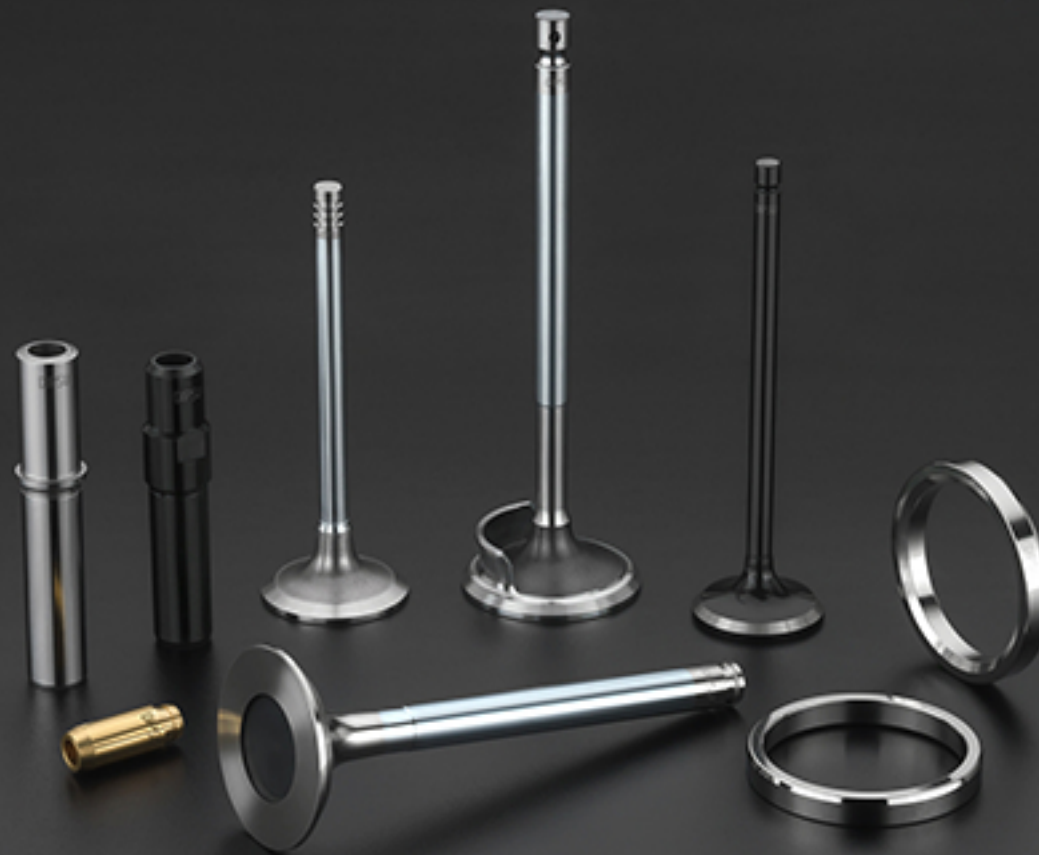


DIPSU®
VALVE GUIDE SEAT



Himanshu Diesel is a Leading manufacturer and exporter of Engine Valves , Valve Guide , Valve Seat and Valve Tappet under the brand name "DIPSU"

Product application :

Agricultural Engines , 2 Wheeler Vehicles

Light Commercial Vehicles , Marine Engines , Tractor

Cars - Petrol & Diesel , Trucks

Valve material :- EN18D, 24, 52, 21/4N, S.S & BI-Metal etc .

HIMANSHU DIESEL

C-1-B-301, AJI G.I.D.C, Phase - 2,
RAJKOT - 360 003, INDIA.

Tel & Fax : +91 -281 - 2389243

M. +91-99255 00062 M. +91-98795 00620

E-mail : himanshudiesel62@gmail.com